

Flat 2 Lucas House
Albion Avenue
Clapham
SW8 2AD



£410,000 Leasehold

A delightful two double bedroom ground floor flat, with plenty of natural light and character of nearly 60 sq.m, located in an attractive period building close to both Clapham High Street and Nine Elms Underground.

Key Features:

- Spacious and light two double bedroom ground floor flat
 - Attractive period building
- Close to Clapham High Street and Wandsworth Road Br
 - Close to Nine Elms
- Huge amounts of character
 - Permit Parking

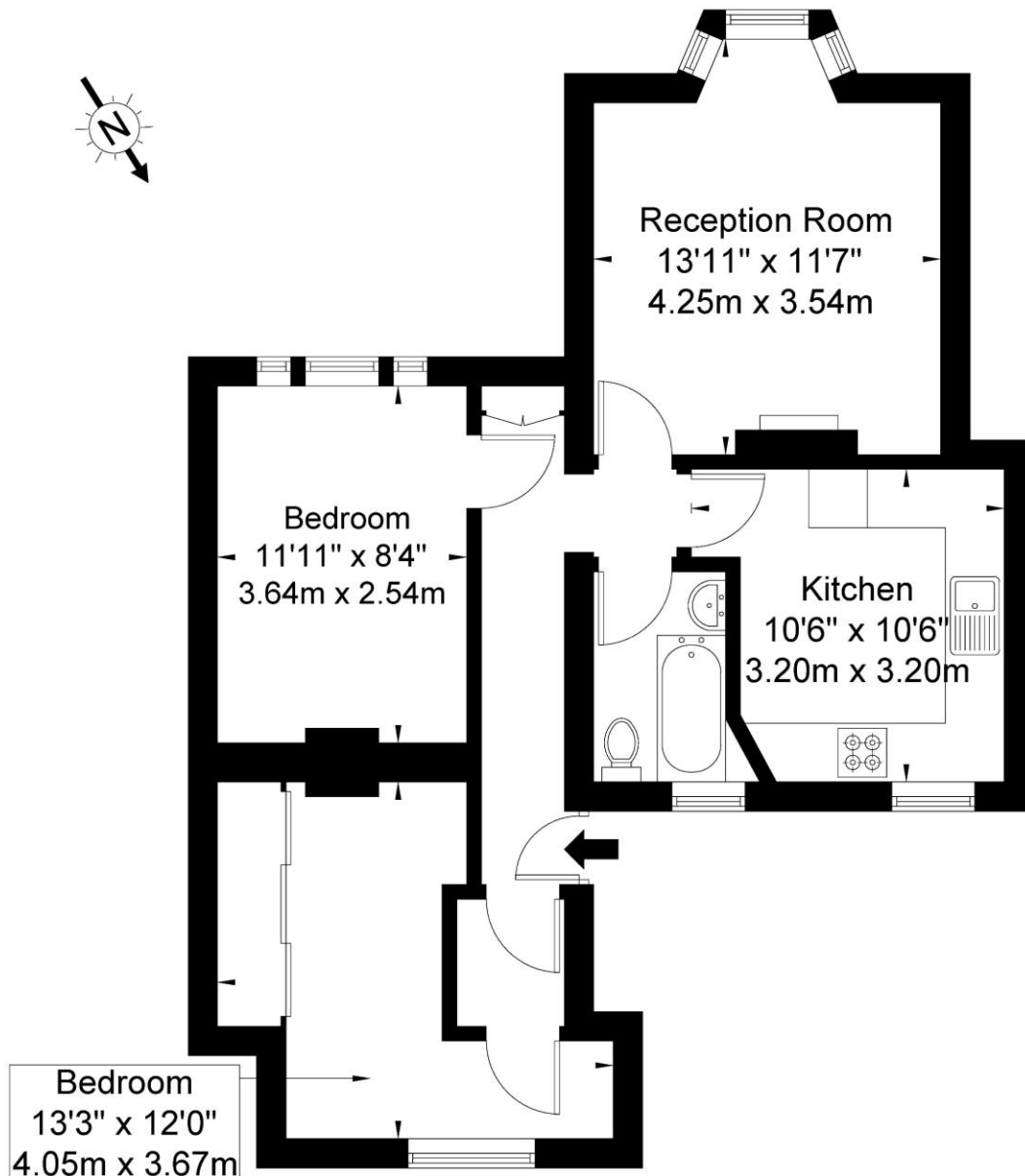






Lucas House Albion Avenue SW8 2AD

Approx Gross Internal Area = 55.7 sq m / 599 sq ft



Ground Floor

Ref

Copyright

**B L E U
P L A N**

The Floor plan is not to scale and measurements and areas shown are approximate and therefore should be used for illustrative purposes only. The plan has been prepared in accordance with the RICS code of Measuring Practice and whilst we have confidence in the information produced it must not be relied on. If there is any aspect of particular importance, you should carry out or commission your own inspection of the property.

Copyright @ BLEUPLAN